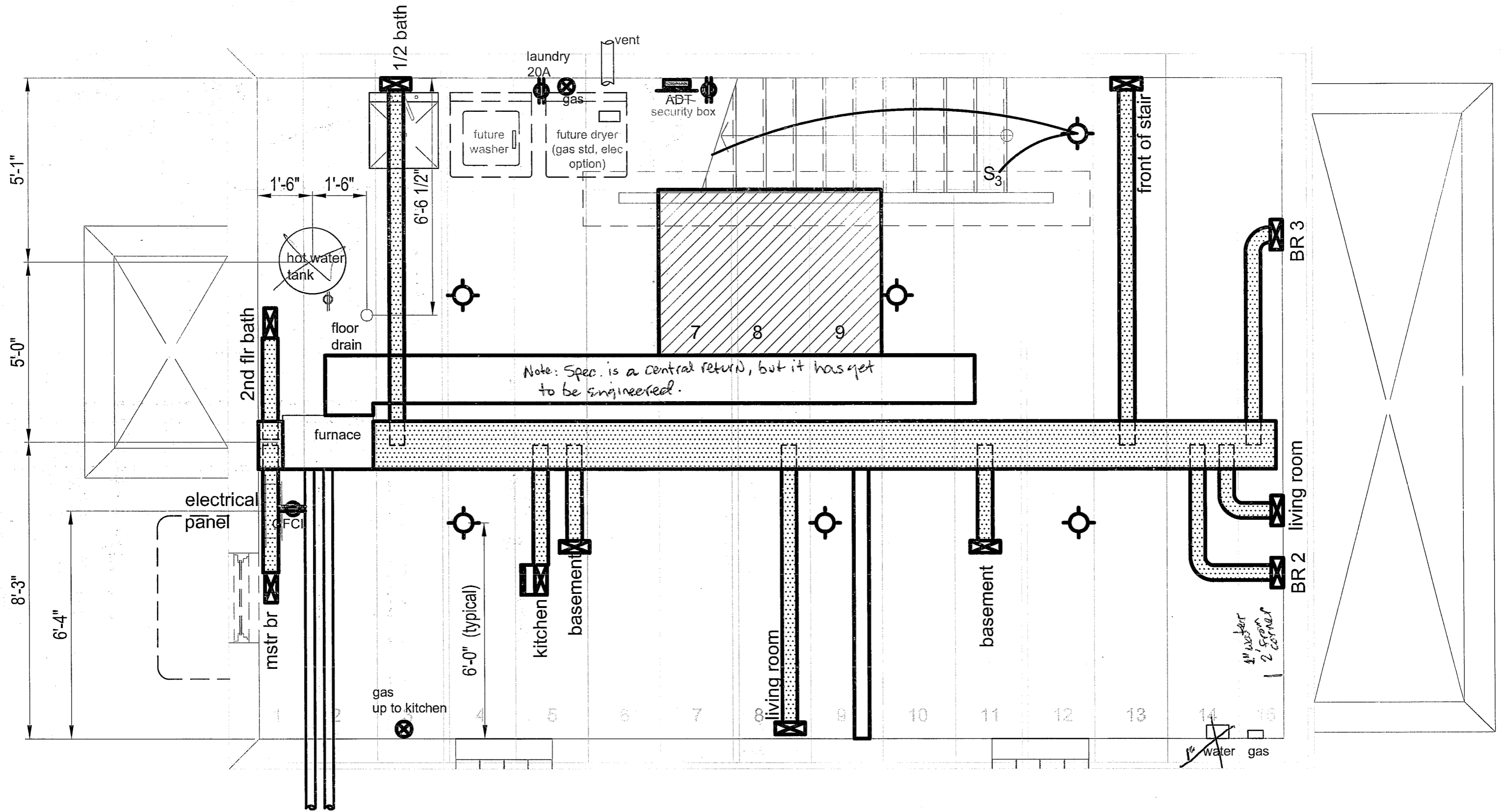


2-STORY FOUNDATION PLAN FOR HSE #249, 4434 MARYLAND 5/29/08

1 **Basement Floor Plan**
 A201 1/4" = 1'-0"

REVISION: 10" GLSW PRECAST WALLS ARE SHOWN. 8" CAST-IN-PLACE WALLS WILL BE USED. OUT-TO-OUT DIMENSIONS REMAIN UNCHANGED. BACKFILL MATERIAL TO BE IN COMPLIANCE WITH TABLE R404.1(1) AND/OR WALL REINFORCEMENT TO BE IN COMPLIANCE WITH TABLE R404.1(2) OF THE 2003 MICHIGAN RESIDENTIAL CODE.

Habitat Detroit
2-Story 3 Bedroom
Dec. 2009 Page 1 of 4



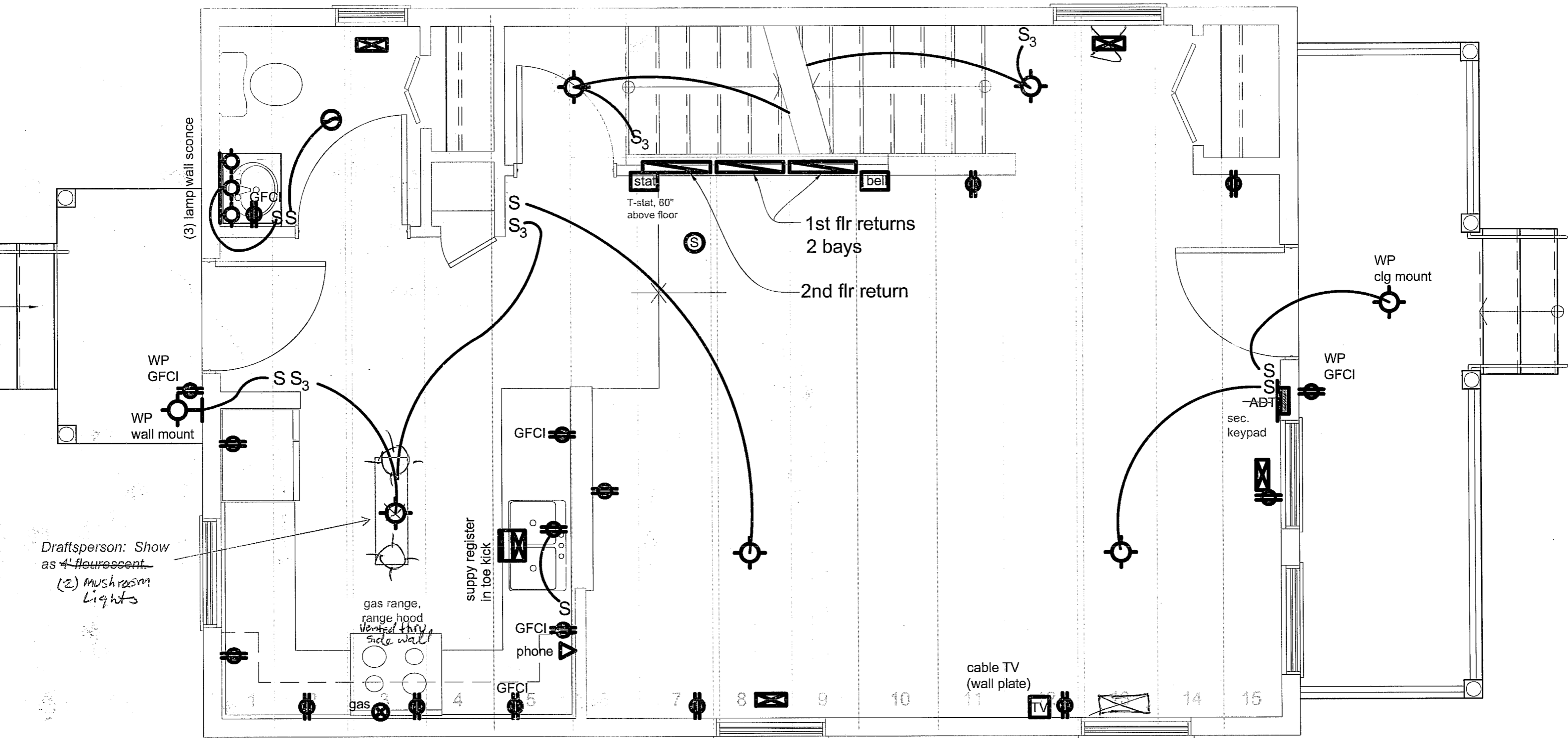
Note: Spec. is a central return, but it has yet to be engineered.

1
A201

Basement Floor Plan

1/4" = 1'-0"

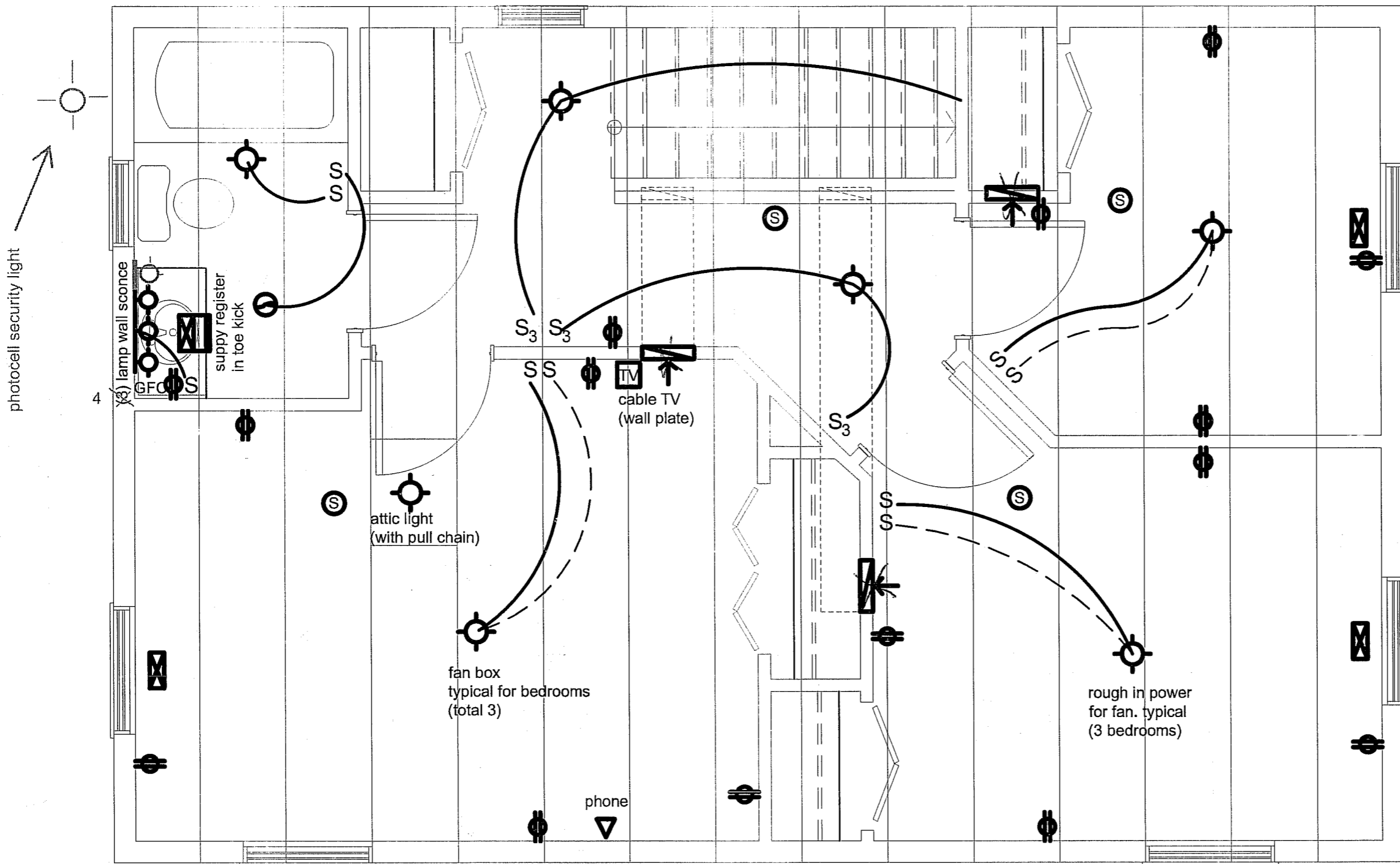
Habitat Detroit
 2 story 3 bedroom
 Dec. 2009 Page 2 of 4



2
A201
First Floor Plan
1/4" = 1'-0"

Habitat Detroit
2-Story 3 Bedroom
Dec. 2009 Page 3 of 4

NOTE:
Security system includes recessed sensors at both entry doors, one motion detector, one keypad, one interior siren, and one exterior siren (in attic).



Habitat Detroit
 2-story 3 bedroom
 Dec 2009 Page 4 of 4

3
 A201
 Second Floor Plan
 1/4" = 1'-0"

HABITAT FOR HUMANITY DETROIT
 2-STORY HOUSE
 MECHANICAL DRAWINGS
 GUNN-LEVINE DRAWING A1501
 MARCH 2008